
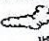
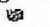
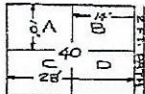


# Garden of the Cross

Warren County Memorial Park

## LEGEND

-  FLOWERING TREES
-  SHRUBS
-  EVERGREENS
-  HEDGE



MASTER BURIAL ESTATES  
A, B, C, D  
10' X 56'

A NON PROFIT CORPORATION  
INCORPORATED 1951

GARDEN DRIVE

GARDEN DRIVE

ROAD OF REMEMBRANCE

RTS. 6 & 62

